

## Yellow-eyed Penguin Trust/ Te Tautiaki Hoiho APPLICANT INFORMATION SHEET

<b>Vacancy:</b>	<b>Ranger (Seasonal)</b> - 9 months, October 24 to June 25
<b>Closing time/date:</b>	12 noon, Monday 9 September 2024

### Mission

To work towards protecting and sustaining the number of yellow-eyed penguins/hoiho within their natural coastal ecosystem.

### Key Values

- **Conservation:** The Trust will work to protect hoiho and other coastal fauna and flora in both the marine and terrestrial environments.
- **Professionalism:** The Trust will conduct its business in a professional manner, establishing and maintaining good relations with associated organisations and individuals.
- **Financial:** The Trust will practice prudent financial management and aim to maintain cash reserves sufficient to finance six months' operational expenses.

### Vision Statements

- YEPT will be demonstrably influential in promoting effective coastal conservation management in both the terrestrial and marine environment.
- YEPT will be a good employer providing professional development pathways for staff.
- YEPT will be able to demonstrate that its habitats are managed according to best-evidence principles.
- YEPT will be an exemplary ENGO collaboratively obtaining optimum conservation outcomes based on a combination of good science and best-practice management.

### What we do

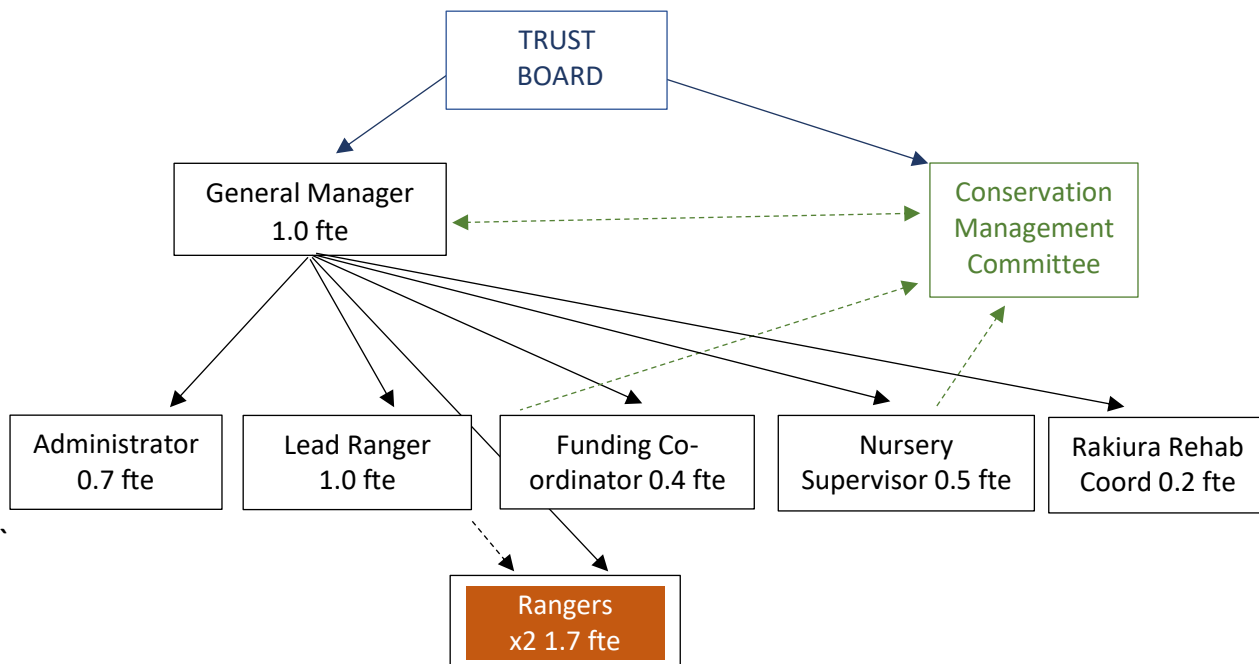
The Yellow-eyed Penguin Trust, founded in 1987, is New Zealand's leading entity working on the conservation of yellow-eyed penguins. We are New Zealand's first single-species conservation trust.

The Trust's conservation strategy is aligned closely with the strategy for hoiho recovery Te Kaweka Takohaka mō te Hoiho. We protect hoiho by managing birds and their habitat along the Otago and Southland coastlines. We work towards minimising mortality associated with introduced mammalian predators and recreating high quality breeding habitats, using thousands of plants grown in the Trust's nursery. We pursue these essential tasks in our own reserves and elsewhere. The work is complemented extensively by education and awareness activities.

### Yellow-eyed penguins/hoiho/*Megadyptes antipodes*

Hoiho are unique to New Zealand, their natural range extends from Banks Peninsula to the subantarctic Auckland and Campbell Islands. The International Union for the Conservation of Nature (IUCN) ranks the birds as endangered owing to their restricted range, extinction pressures in their marine and terrestrial environments, and their extreme fluctuations in numbers.

## Structure



## About the Team

The Trust Board can comprise up to 15 trustees. There are presently 12. The Conservation Management Committee oversees field operations.

The staff team is managed by the General Manager as the representative of the Trust Board and link between staff and trustees. There are weekly staff meetings each Tuesday providing an opportunity to discuss work plans, health and safety and catch-up on what is generally happening for each staff person and the Trust in general.

## Location

The Trust's work covers the geographic range of the hoiho which is from Banks Peninsula south along the eastern coast of the South Island, Stewart Island/Rakiura and, at times, the sub-Antarctic Auckland and Campbell Islands.

The Trust's office is based in John Wickliffe House in Central Dunedin. Our plant nursery is based at Company Bay on the Otago Peninsula.

This position is based at the Trust's Nursery at 12 McTaggart St, Company Bay, Dunedin. From time to time, you will be expected to work from the Trust's office at John Wickliffe House. e.g. for staff meetings.

Travel throughout Otago and Southland will be required and, from time to time and with prior agreement you will be expected to stay overnight.

## About the Role

The Yellow-eyed Penguin Trust is a Registered Charity and is funded from grants, donations, sponsorships and bequests. This position is fixed-term position from October 2024 to June 2025. As with all our roles, it is funded from Trust donations, and is based on funds available.

This role is a direct report of the General Manager, however day-to-day supervision and work allocation is carried out by the Lead Ranger. Please see the role description for further details of this position.

**Hours of work**

The role is seasonal from October to June and full-time during that period, 40 hours per week, to be worked from Monday to Friday, usually from 8:30am to 5:00pm. From time to time and with prior agreement, these hours may be varied, especially during the chick-rearing and moult stages of the season, there is a sometimes a requirement for work outside of these hours.

We have a field base at Long Point in the Catlins for staff to stay overnight.

**Salary**

The salary range is \$52,000-\$57,824 (full time equivalent) per annum.

**Pre-Employment Background Checks**

Should you be shortlisted for this position following interview, we will discuss with you contacting your referees for comment on your suitability for this position.

The Trust retains the right to undergo police vetting.

You will be asked to provide evidence of your right to work in New Zealand as either a citizen or permanent resident.

**How to Apply**

Applications will be received up to 12 noon on Monday 9<sup>th</sup> September 2024.

Please complete our application form and email with your covering letter and CV, including your competence for this position as outlined in the role description, to Amanda Salt, Interim General Manager on: [generalmanager@yeptrust.org.nz](mailto:generalmanager@yeptrust.org.nz)

Further information on the Trust can be found at: [www.yellow-eyedpenguin.org.nz](http://www.yellow-eyedpenguin.org.nz)